



**GP Health Service**  
Practitioner Health Programme

# The NHS Practitioner Health Service England

Richard Jones. Clinical Director  
Lucy Warner. Chief Executive.

*Supporting the health of health professionals*



GP Health Service  
Practitioner Health Programme

Doctors/Dentists come to us.  
They get well and **STAY WELL**  
in large numbers

# Practitioner Health Service

specialises in taking care of doctors and dentists with mental illness and addiction problems

## PHS A MULTI-AWARD WINNING SERVICE



"Without PHS I think I would have hung up my stethoscope or would not have been in this world."



"Access to PHS was quick, thoroughly supportive and empathetic - good links to other therapies."



"Absolutely brilliant. PHS have got me through really dark days. It has been really supportive, positive and encouraging which is essential for my confidence at the moment."



"My life has changed in its entirety. I am now healthy, happy and working as a safe and successful doctor. Without PHS this wouldn't have happened."



Our Award-winning booking App!



"Four months ago I was depressed, suicidal and felt my life had fallen apart. Now I am back at work full time enjoying life again and have a very sturdy support network. PHS are first class and have likely saved my life."

We've come a **LONG WAY** in **10 years!**

**5000** patients in 10 years - **1000** doctors back in work

### Our team . . .

- Mental Health Nurses
- Therapists
- Specialist advisors
- Operational team
- GPs
- Psychiatrists

Doctors suffer the highest rates of mental illness and suicide

- Depression
- Bipolar
- PTSD
- Undiagnosed schizophrenia
- Anxiety
- Addiction



Our service delivery costs less than £5 million pa

Have saved the NHS around £230 million - the cost of a medical school

**SUPPORTING THE HEALTH OF HEALTH PROFESSIONALS**

# Our principles

Patient centered

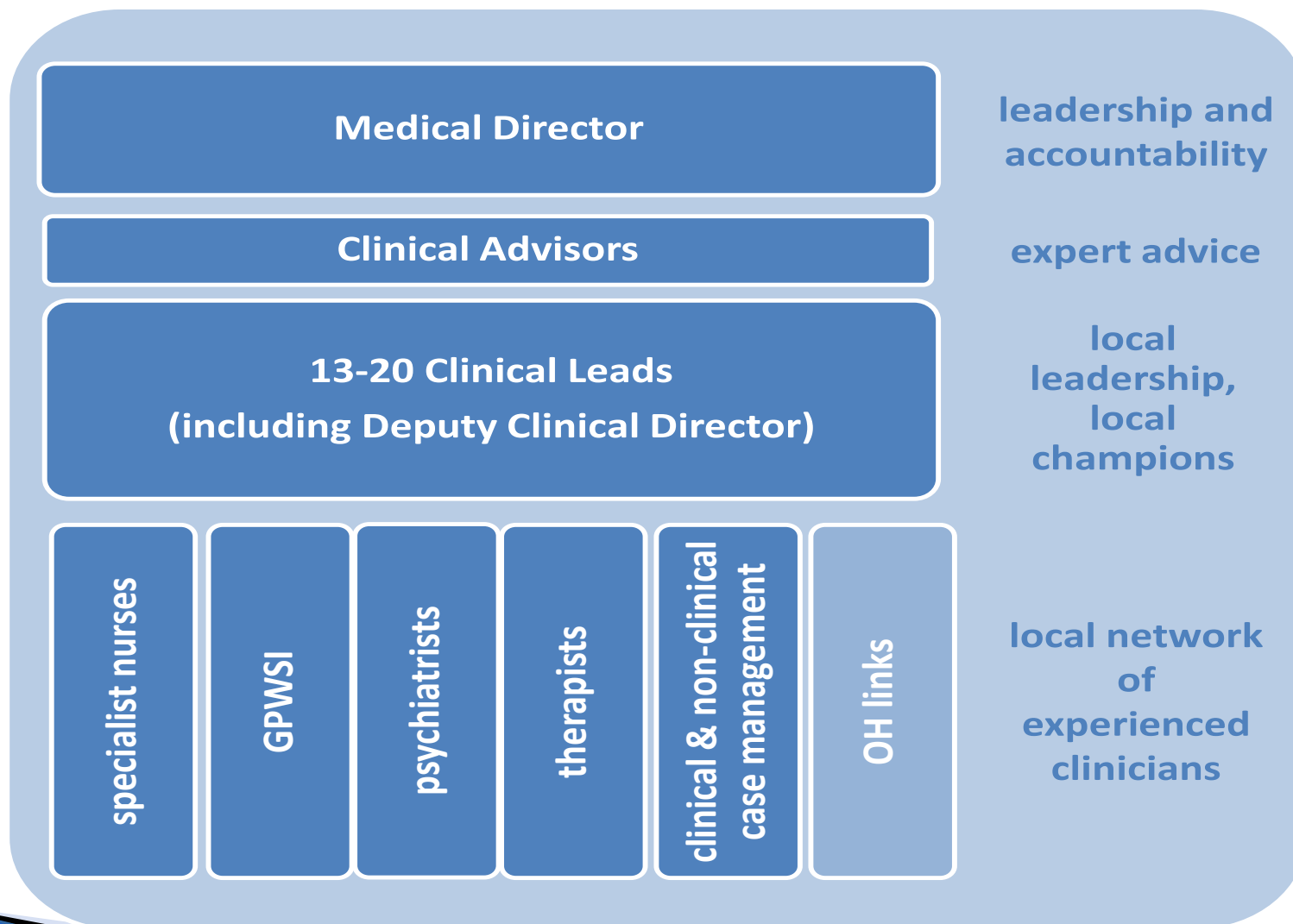
Confidential

Accessible



# What is the service structure?

## GP Health Service Practitioner Health Programme



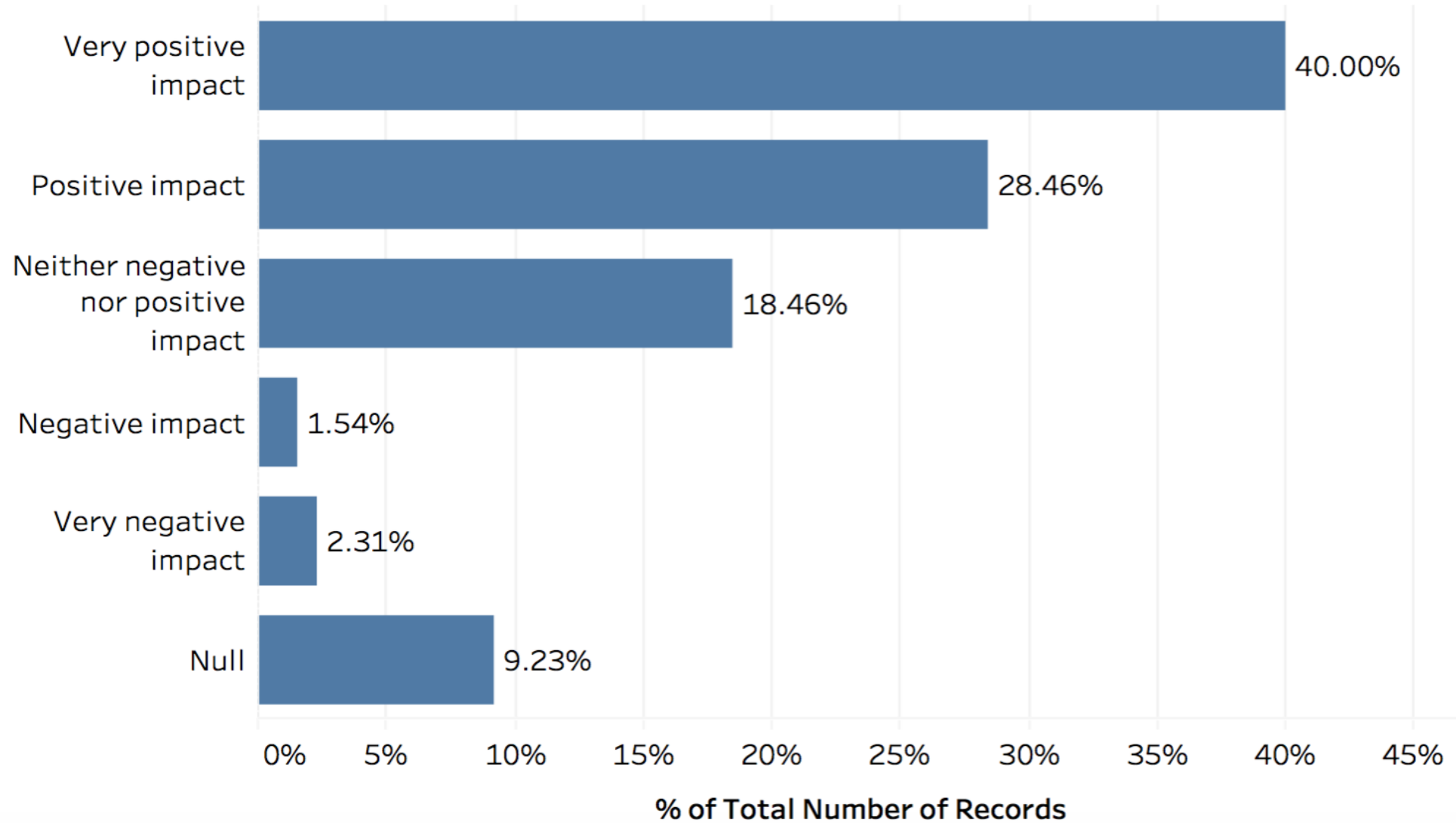
# Headlines

- ▶ 8000 new referrals in 10 years (3500 in 2018/19)
- ▶ Active caseload of 1500 patients
- ▶ 85,000 doctors eligible to self refer
- ▶ But in late 2019 opens up to 170,000 potential patients
- ▶ State (NHS) funded
- ▶ Very few exclusions
- ▶ No mandatory reporting
- ▶ Comprehensive service
- ▶ Externally evaluated as 'outstanding' by Government Regulators
- ▶ Very high patient satisfaction rates

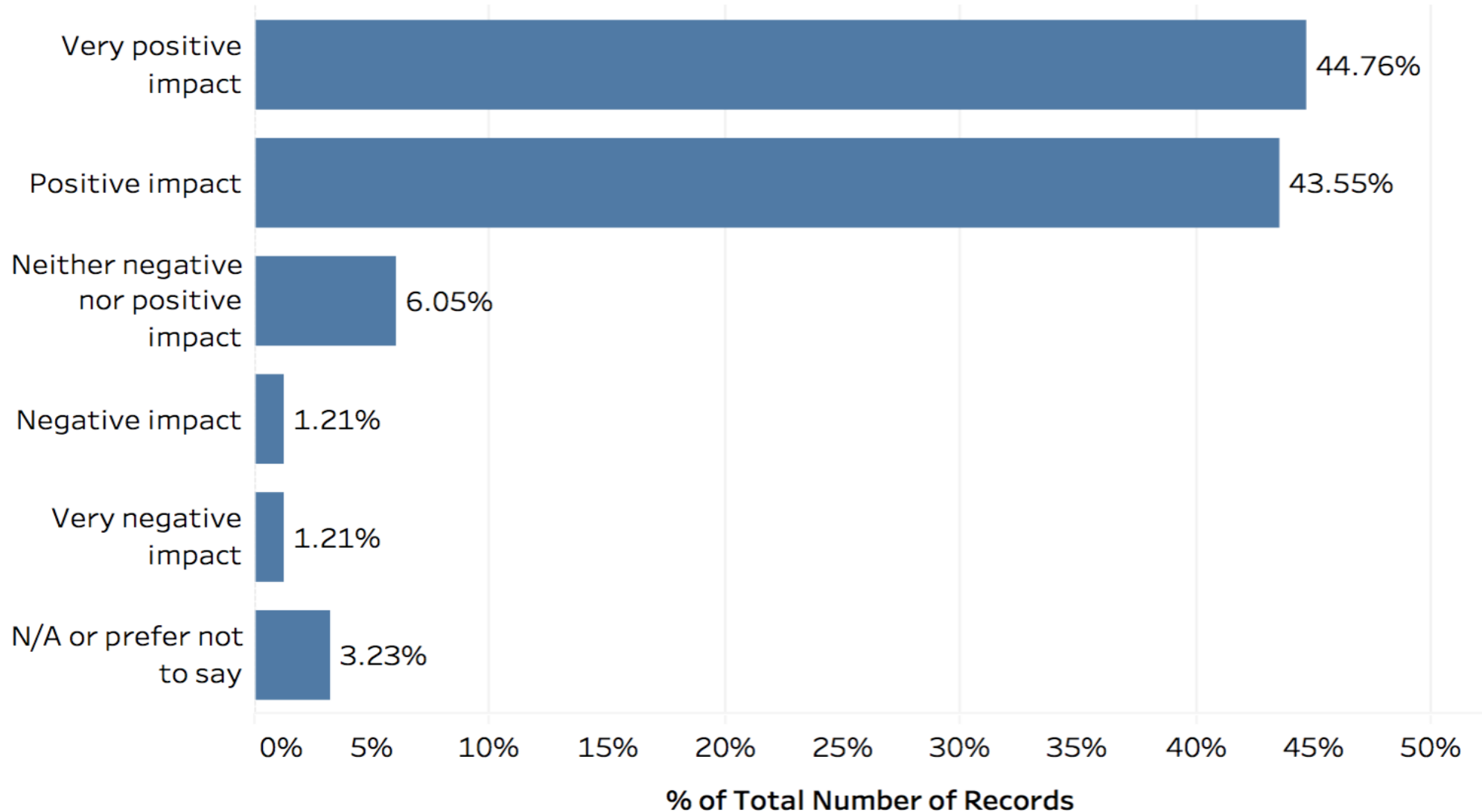
# Changes over 10 years

- ▶ Mean age from 50 years old to 30
- ▶ 50/50 male/ female in 2009- 30/70 in 2019
- ▶ Addictions cohort reduced from 35% to 10%
- ▶ Regulator involvement reduced from 30% to 8%
- ▶ Team size of 3 in 2009 to 300 in 2019

## To what extent do you believe the NHS GP Health Service is having an impact on your ability to return to clinical practice (if not currently working)

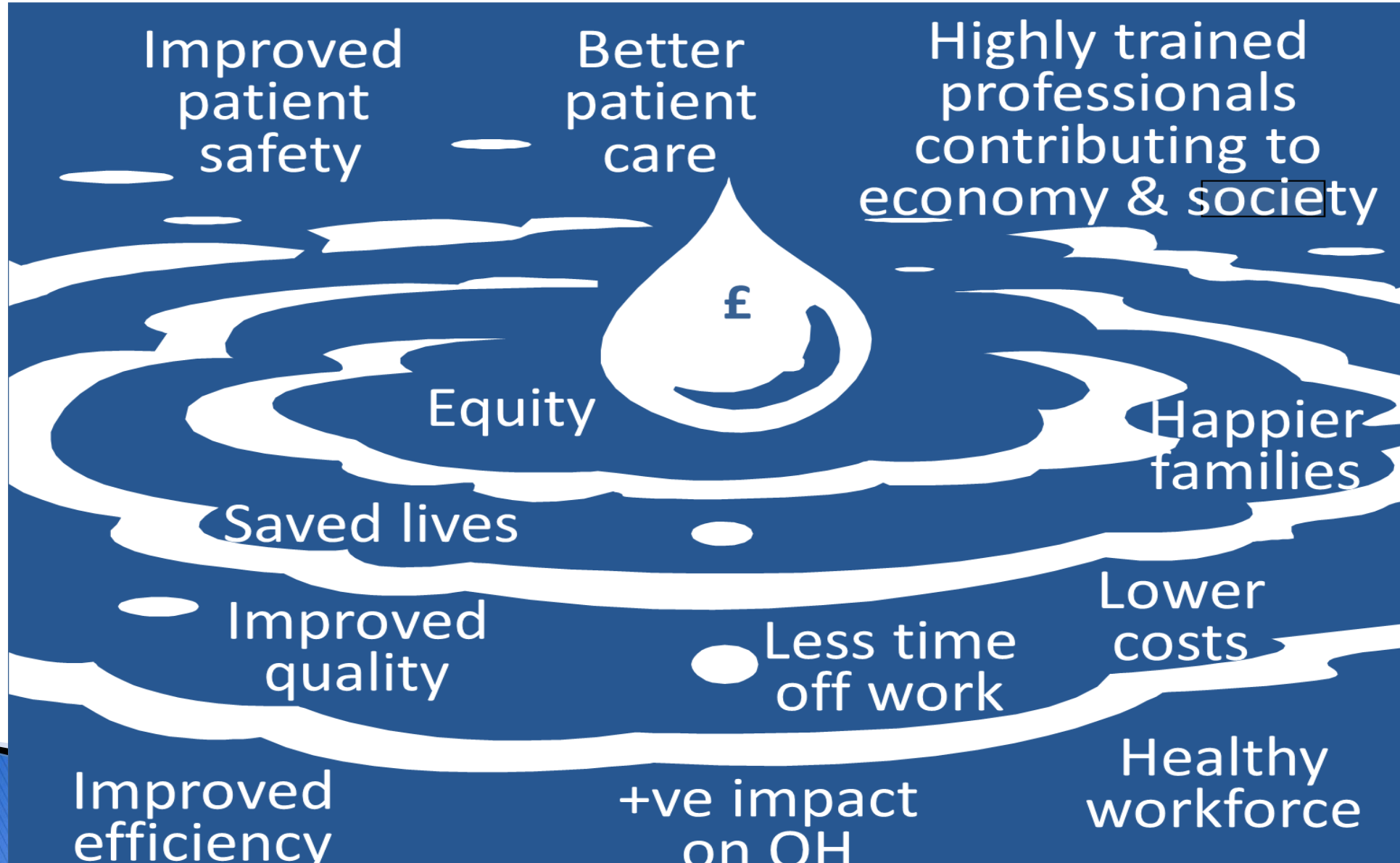


## To what extent do you believe the NHS GP Health Service is having an impact on your personal wellbeing?





# Value for Money



Doctors/Dentists come to us.  
They get well and **STAY WELL**  
in large numbers

# Practitioner Health Service

specialises in taking care of doctors and dentists with mental illness and addiction problems

## PHS A MULTI-AWARD WINNING SERVICE



"Without PHS I think I would have hung up my stethoscope or would not have been in this world."

JOINED UP APPROACH  
TO PATIENT CARE



"Absolutely brilliant. PHS have got me through really dark days. It has been really supportive, positive and encouraging which is essential for my confidence at the moment."

PATIENTS ARE PART  
OF THE CARE TEAM



"My life has changed in its entirety. I am now healthy, happy and working as a safe and successful doctor. Without PHS this wouldn't have happened."

We've come a  
**LONG WAY**  
in  
**10 years!**

WE LISTEN

CONFIDENTIAL

CONTINUITY OF  
CARE

EXPERT  
CLINICIANS

A TREATMENT  
SERVICE

TRULY INTEGRATED

DAILY,  
MULTI-DISCIPLINARY  
TEAM MEETINGS



Our  
Award-winning  
booking  
App!

"Four months ago I was depressed, suicidal and felt my life had fallen apart. Now I am back at work full time enjoying life again and have a very sturdy support network. PHS are first class and have likely saved my life."



**5000** patients in 10 years - **1000** doctors back in work

### Our team . . .



Doctors suffer the highest rates of mental illness and suicide

Depression    PTSD    Anxiety  
Bipolar    Undiagnosed schizophrenia    Addiction



Our service delivery costs less than £5 million pa

Have saved the NHS around £230 million - the cost of a medical school

**SUPPORTING THE HEALTH OF HEALTH PROFESSIONALS**

# Any Questions?

- ▶ [www.php.nhs.uk](http://www.php.nhs.uk)
- ▶ [www.gphealth.nhs.uk](http://www.gphealth.nhs.uk)
- ▶ [Richard.Jones@nhs.net](mailto:Richard.Jones@nhs.net)
- ▶ [Lucy.Warner@nhs.net](mailto:Lucy.Warner@nhs.net)